

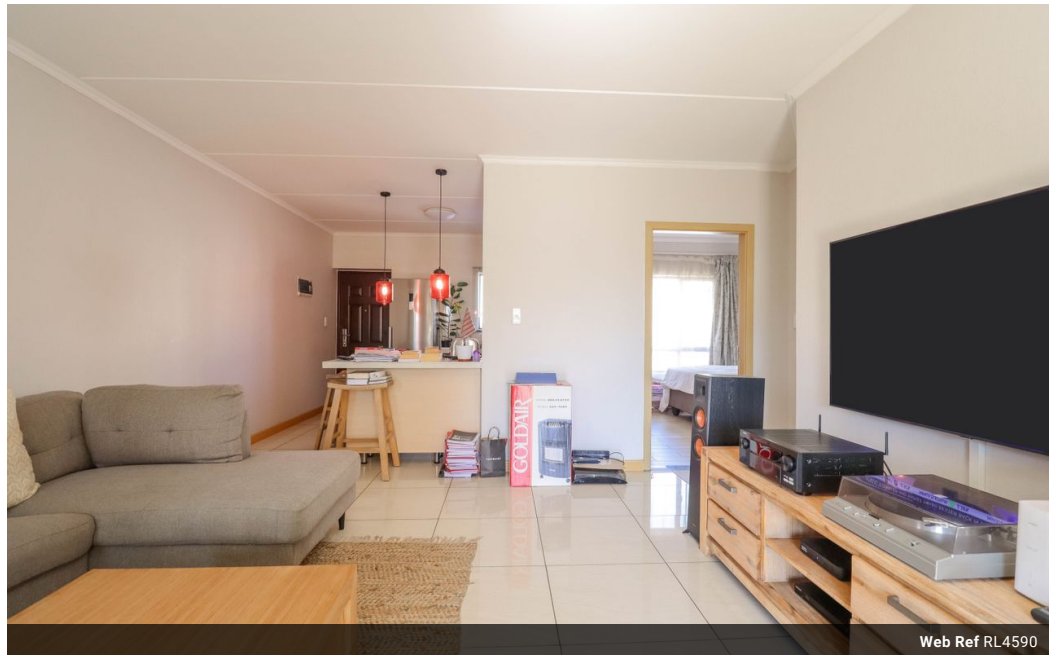


Zethu Dube
Candidate Property Practitioner
Registered with PPRA
(FFC 202 377 617 05)
0631200224
zethu@vartrust.co.za

Contact Head Office

087 1354450

Kutoroka
Scorpion Trail
Midrand



Web Ref RL4590



R1,165,000

Monthly Bond Repayment R12,024.99
Calculated over 20 years at 11% with no deposit.

Transfer Costs R32,749.00 **Bond Costs** R25,220.00
These calculations are only a guide. Please ask your conveyancer for exact calculations.

Monthly Rates R851

2 2

Elegant Unit in Premier Complex

Discover the perfect blend of modern elegance and convenient living in this stunning unit, located within a prestigious residential complex. Designed for those who appreciate quality and comfort, this residence is ideal for anyone seeking a sophisticated urban lifestyle. Situated on the first floor

The unit features a generous open-plan living/dining area providing ample space for relaxation and entertainment. Step outside onto your private balcony, an ideal spot for morning coffee, evening drinks, or simply unwinding while enjoying the fresh air.

A modern kitchen featuring high-quality appliances, space for 2 undercounter appliances, plenty of storage, and a breakfast bar.

The master bedroom comes complete with an en-suite bathroom fitted with bath tub, ample cupboard space, offering a private retreat for relaxation.

The...

Features

Interior

Bedrooms	2
Bathrooms	2
Kitchens	1
Recep. Rooms	1
Furnished	No

Exterior

Carports / Parkings	1
Security	Yes
Pool	Yes
Views	False

Sizes

Floor Size	79m ²
------------	------------------