

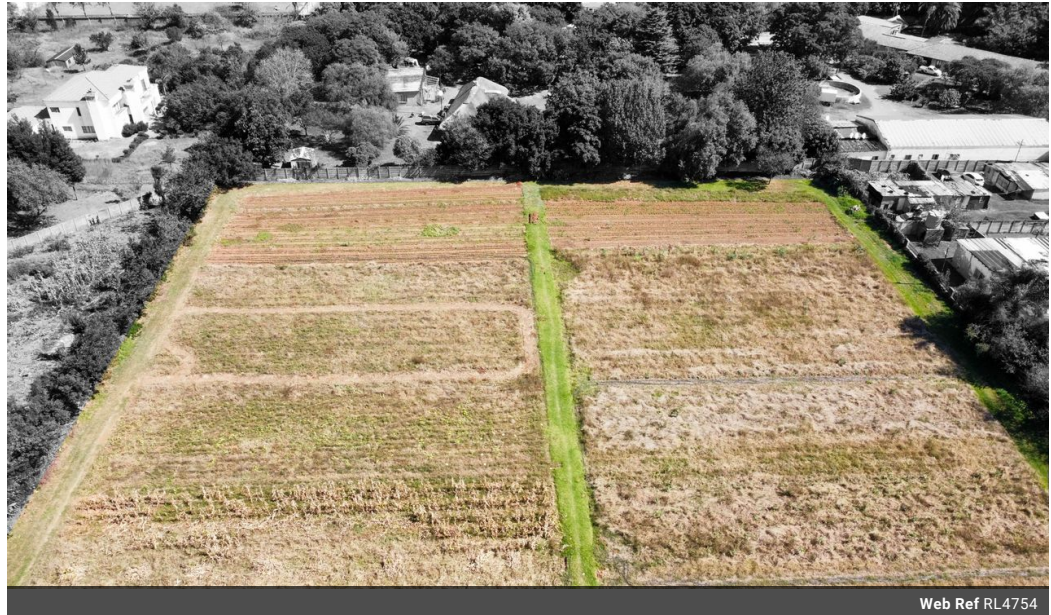


**Renee Varejes**  
Principal Property Practitioner  
Registered with PPRA (FFC 202 221 238 5)  
0827777082  
renee@vartrust.co.za

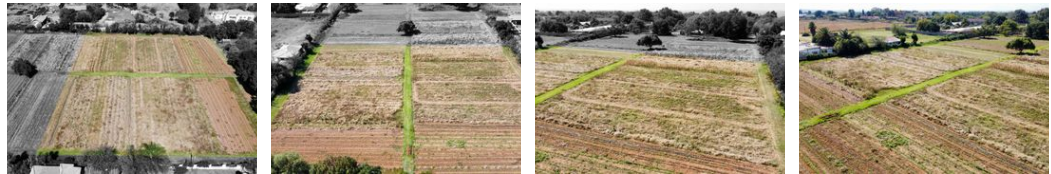
Contact Head Office

087 1354450

Kutoroka  
Scorpion Trail  
Midrand



Web Ref RL4754



**R1,250,000**

**Monthly Bond Repayment** R12,902.35  
Calculated over 20 years at 11% with no deposit.

**Transfer Costs** R36,117.00    **Bond Costs** R27,105.00  
These calculations are only a guide. Please ask your conveyancer for exact calculations.

**A lifestyle choice!**

Tucked away up your own panhandle driveway is this flat rectangular piece of land ready for building a family residence and lots of space for your own farming, play areas and a work from home venture. This is a new subdivision of 8565sqm (inclusive of the pangandle). Surrounded on all sides by friendly neighbours, the land will be provided with access to municipal water, you will need to apply for connection. Eskom power is also available for connection.

Close to Glen Austin High School, Mall of Africa and other amenities. Vacant land requires a minimum deposit of 40% , the balance can be bonded.

**Features**

