



Jemma Parcke
 Non-Principal Property Practitioner
 Registered with PPRA (FFC 202 273 867 3)
 0823704615
 jemma@vartrust.co.za

Contact Head Office

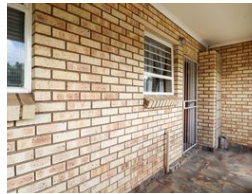
087 1354450

Kutoroka
 Scorpion Trail
 Midrand



SOLE MANDATE

Web Ref RL4853



R900,000

3 2

Monthly Bond Repayment R9,289.70
 Calculated over 20 years at 11% with no deposit.

Transfer Costs R28,244.00 **Bond Costs** R21,450.00
 These calculations are only a guide. Please ask your conveyancer for exact calculations.

Monthly Levy R1,020 **Monthly Rates** R787

Bright and cheery starter home.

Perfectly positioned in the heart of a well-maintained and secure complex, this spacious first floor apartment is fully tiled, with natural light that pours into all areas. As well as being a great investment opportunity, this apartment is ideal for a first time home buyer or small family.

Fully tiled throughout, the airy open-plan kitchen flows easily into a spacious dining room/lounge, which leads onto the wide balcony with a built-in braai and wash line. Its Cherrywood cupboards, of which there are plenty, and granite countertops, including a breakfast bar, add warmth and character to this neat kitchen. In addition, there is space for a side-by-side fridge/freezer and two under-counter appliances.

The three well-sized bedrooms are spacious, offer ample built-in cupboard space and are large enough to fit a king/queen sized...

Features

Interior

Bedrooms	3
Bathrooms	2
Kitchens	1
Recep. Rooms	2
Furnished	No

Exterior

Carports / Parkings	2
Security	Yes
Pool	No
Views	False

Sizes

Floor Size	85m ²
------------	------------------