



Roueida Denath
 Non-Principal Property Practitioner
 Registered with PPRA (FFC 202 231 751 3)
 0825527077
 roueida@vartrust.co.za

Contact Head Office

087 1354450

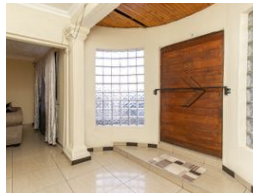
Kutoroka
 Scorpion Trail
 Midrand

UNDER OFFER



SOLE MANDATE

Web Ref RL4617



R995,000

Monthly Bond Repayment R10,270.27
 Calculated over 20 years at 11% with no deposit.

Transfer Costs R32,828.00 **Bond Costs** R27,865.50

These calculations are only a guide. Please ask your conveyancer for exact calculations.

Monthly Rates R885



BEAUTIFUL JEWEL IN THE CROWN HOME

BEAUTIFUL huge family home with four bedrooms . The main entrance into the home is through a pivot front door or the double garage with automated doors . A drive through garage door into the back yard, allows extra parking for two or three cars. Park both your cars in the double garage and walk through the interleading door into the entrance hall. This flows into the open plan lounge and dining area with a fireplace for alternate heat. A glass door takes you outside to a private enclosed courtyard. This outdoor entertainment area includes a built-in braai. Lets go back inside. The dining area adjoins the kitchen. A really well laid out modern kitchen, ideal for all the aspirant master chefs in your family. Includes a fitted stove, under counter oven, loads of cupboard space for packing and storage, grocery cupboard, space for...

Features

Interior		Exterior		Sizes	
Bedrooms	4	Garages	2	Floor Size	200m ²
Bathrooms	2	Carports / Parkings	7	Land Size	395m ²
Kitchens	1	Security	Yes		
Recep. Rooms	2	Pool	No		
Furnished	No	Views	False		