



**Renee Varejes**  
Principal Property Practitioner  
Registered with PPRA (FFC 202 221 238 5)  
0827777082  
renee@vartrust.co.za

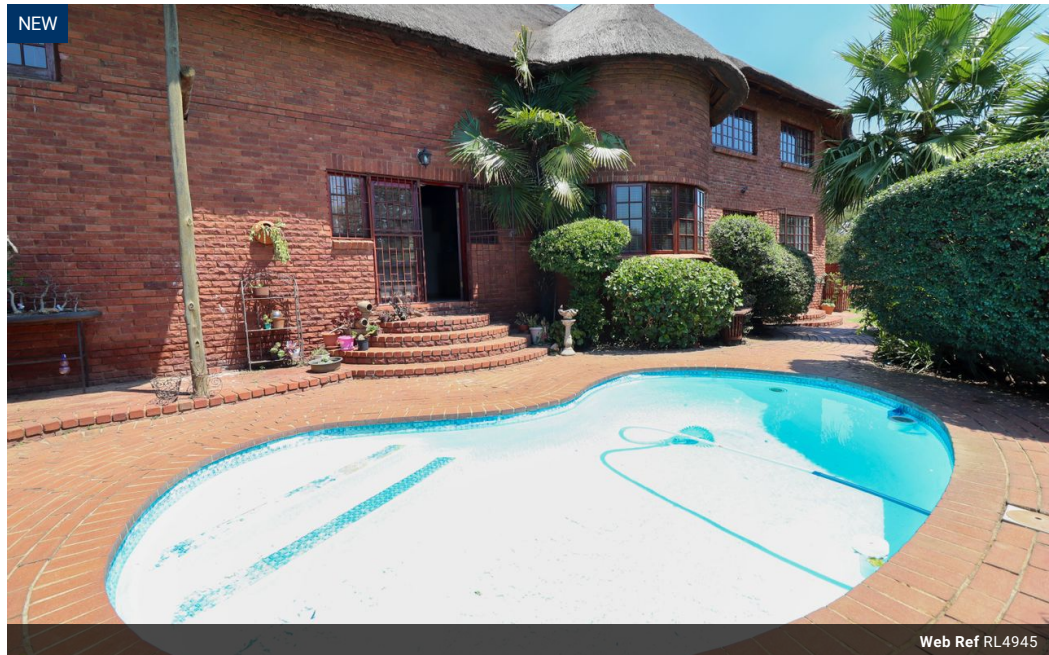


**Barbara Hensley**  
Non-Principal Property Practitioner  
Registered with PPRA (FFC 202 231 749 6)  
0763138408  
barbara@vartrust.co.za

Contact Head Office

087 1354450

Kutoroka  
Scorpion Trail  
Midrand



Web Ref RL4945



R2,700,000

**Monthly Bond Repayment** R27,869.09  
Calculated over 20 years at 11% with no deposit.

**Transfer Costs** R133,887.00    **Bond Costs** R40,300.00  
These calculations are only a guide. Please ask your conveyancer for exact calculations.

4    3    4

### Country Lifestyle 10 minutes from the City

This well maintained, double storey, thatched, four bedroom home is located on a cul de sac of the leafy Mnandi Agricultural Holdings. Plenty of land for more cottages or work from home. Well secured.

#### Ground floor

The remote controlled security gate leads into the residential location. The large reception area opens into the well appointed kitchen, the lounge and the outdoor entertainment area. The kitchen has plenty of cupboards space for several appliances. A separate scullery and laundry. The dining room has space for a large table. The lounge has a double volume ceiling letting in plenty of light giving an impression of spaciousness. The outdoor entertainment area includes a swimming pool, manicured garden area, thatched lapa and pizza oven.

A large office with a separate kitchenette has plenty of...

### Features

**Pets Allowed** Yes

**Interior**  
Bedrooms 4  
Bathrooms 3  
Kitchens 1  
Recep. Rooms 2  
Studies 1  
Furnished No

**Exterior**  
Garages 4  
Carports / Parkings 4  
Security Yes  
Dom. Accom. 1  
Pool Yes  
Views True

**Sizes**  
Floor Size 537m<sup>2</sup>  
Land Size 10,471m<sup>2</sup>

