



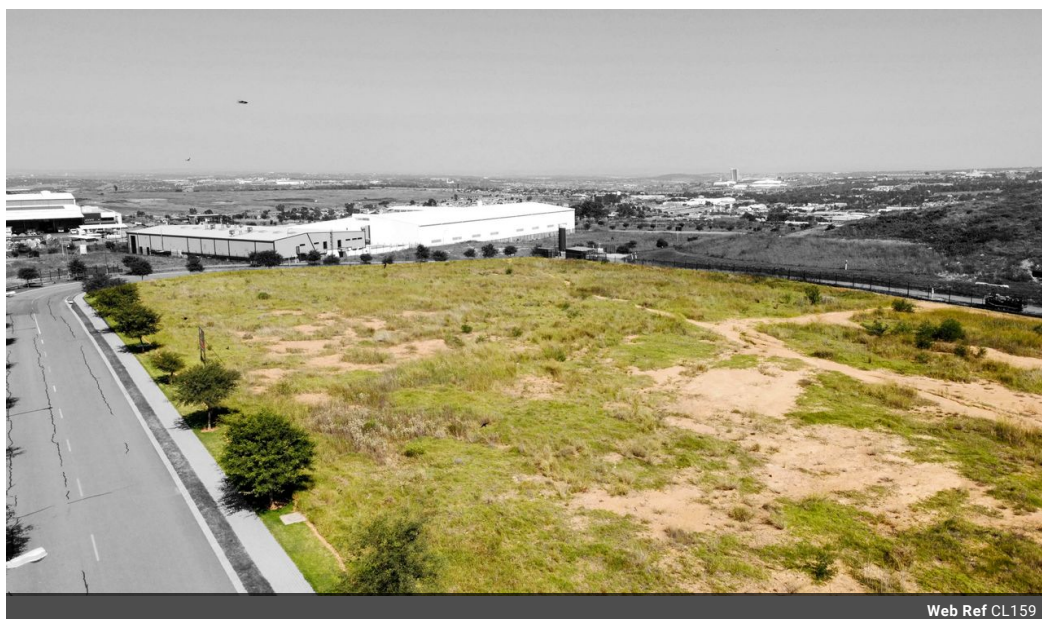
Renee Varejes
Principal Property
Practitioner
Registered with PPRA
(FFC 202 221 238 5)
0827777082
renee@vartrust.co.za

Contact Head Office

087 1354450

Kutoroka
Scorpion Trail
Midrand

10,593m² Vacant Land For Sale in Chloorkop



Web Ref CL159



R13,453,110

10,593m² Vacant Land For Sale in Chloorkop

Lords View has been planned as an environmentally friendly and eco-sensitive industrial and logistics park that makes use of the latest developments in cleaner, greener township development.

Lords View provides a prime location to help reduce transportation costs and streamline the supply-chain process. With the increased global competition and transportation costs, the location of your company distribution centre or manufacturing base becomes vitally important in cost management.

Lords View was built with:

Widened road infrastructure built to Allandale Road specification;

Traffic circles within the development designed to accommodate super-links, which provides quick vehicle flow through the development;

Central location near Gauteng's major business nodes;

Multiple option access to major roads and destinations;

Features

